

Townsville Bulletin

We're for you

P7

OUTAGES LEAVE LOCALS BOILING

DOUBLE BLACKOUT FURY

Angry rural residents demand answers after two power outages in two days left families sweating through hours of discomfort as Ergon begins inspection.

FULL STORY, PAGE 5.



SKY HIGH
\$65M TOWER TO SHATTER RECORD

Harvey Norman®



SAVE
\$200

\$1798

HP Envy x360 2-in-1 Laptop.[^]
Intel® Core™ Ultra 7 processor, 16GB RAM, 512GB SSD, 14" WUXGA touchscreen, Windows 11 Home.
A0MT6FA



More than a great PC, an Intel AI PC.

Enable the most AI experiences like helpful productivity assistants, text and image creation and collaboration effects to make everything you do easier, faster, better now and for years to come.

NEXT GEN AI
AT Harvey Norman®

Meet the new class of laptops built to change the way you work, create and play.



My Personal AI
Continuously learning, always personal with Next Gen AI



Security
Next Gen AI stays on your PC, making your data more secure without compromising performance



Multi-Day Battery^{*2}
Power through your work or school day with Next Gen AI



Productivity
Powerful time-saving tools make every task easier with Next Gen AI

POWERED BY
intel core
ULTRA

Ends 17/11/24. Each Harvey Norman® store is operated by an independent franchisee. The products in this advertisement may not be on display or available at all Harvey Norman complexes. If you wish to view these products in person, you should ring 1300 GO HARVEY (1300 464 278) before attending any complex to check to see if a franchisee at that complex has these products in store. Accessories shown are not included. [^]Available online and in selected stores. Intel, the Intel logo, and Intel Core are trademarks of Intel Corporation or its subsidiaries. *1. Savings are off our normal online displayed prices. *2. Battery life varies significantly with settings, usage and other factors.

A \$65m, 10-storey building to include 18 homes Tower has luxury at heart

Leighton Smith

A \$65m residential tower offering spectacular views of Magnetic Island will soon rise out of the ground next to The Strand, delivering North Queensland its first luxury waterfront apartments in almost a decade.

Townsville developer Maidment Group has revealed more details about its 10-storey Marina Residences project, which will feature 18 luxury residences built on the last remaining 1400 sqm site at the end of Mariners Peninsula, opposite Ardo Townsville.

Prices will start from \$2.7m for the residences, which comprises 15 spacious three-bedroom apartments and three Sky Homes, with the spectacular 495sq m penthouse expected to shatter sales records.

Residents will enjoy a suite of sophisticated resort-style amenities, including a gym, a private meeting room and a dining room, as well as a roof-top pool and sundeck that offers unobstructed vistas across the waterfront and east to Magnetic Island.

Bringing a new era of opulence to a luxury-starved market, the project realises the vision of long-time local developer Glen Maidment, who asked renowned Brisbane-based architect Bureau Proberts to design an architectural masterpiece that would be unrivalled in the city.

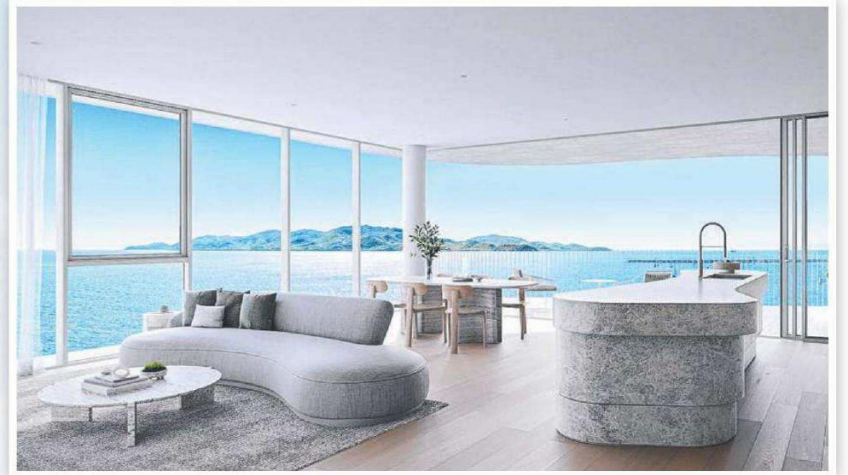
"Marina Residences is destined to become a landmark project that will redefine luxury living in the region," Mr Maidment said.

"We feel the time is right to deliver Marina Residences because there is such demand for luxury property in the region, but no product is available.

"We bought the site some years ago and have planned meticulously to deliver a project that will set a new benchmark for North Queensland."

The developer appointed Townsville-based Hurst Constructions to deliver the project, with an estimated 50 direct jobs created during the construction phase, along with more than 200 subcontractors.

Mr Maidment said they received strong interest prior to the formal release of the project, with seven sales secured to pre-registered buyers prior to



An artist's impression of the proposed tower at Mariners Peninsula on The Strand in Townsville (above); an apartment interior (top right); and a master ensuite (bottom right).



An artist's impression of the view from Marina Residences, looking towards The Strand.

the November launch, reflecting the pent-up demand for luxury apartments in Townsville.

"Sky Home 1 is the most significant residence to ever be re-

leased in North Queensland, presenting an incredible opportunity for the discerning buyer to secure a penthouse which compares to the very best ultra luxury properties on

offer throughout Queensland," he said.

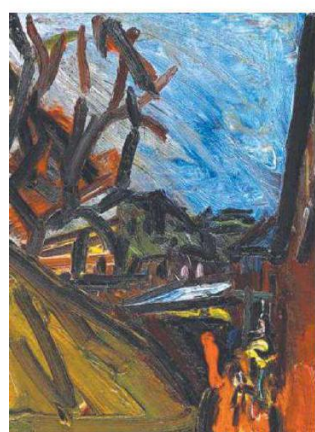
"We believe the Townsville market is primed for residences of this calibre, and we have been firmly encouraged by the

positive early response from the market. The economy is humming, and there is just no stock.

"We've spared nothing to create one of the most exciting

new developments in the heart of Townsville. It's ... undoubtedly one of the best projects we have ever presented."

For more information, visit:
www.maidment.com.au



Auerbach's To The Studios.

Leading figurative painter who fled Nazi Germany dies at 93

LONDON: Frank Auerbach, who fled Nazi Germany as a child and became one of Britain's leading 20th-century artists, has died in London aged 93, his gallery announced.

"Frank Auerbach, one of the greatest painters of our age, died peacefully in the early hours of Monday, November 11 at his home in London," Frankie Rossi Art Projects said.

Focusing on portraiture and cityscapes, the German-

British artist was known for his artworks heavy with paint, created after repeatedly scraping the paint on his canvas and restarting until he was satisfied.

He represented Britain at the Venice Biennale in 1986, sharing the grand prize, the Golden Lion, with German artist Sigmar Polke.

"We have lost a dear friend



Frank Auerbach

and remarkable artist but take comfort knowing his voice will resonate for generations to come," said Frankie Rossi Art director Geoffrey Parton.

Born in Berlin in 1931, Auerbach came to Britain as a refugee in 1939. His parents were killed in the Auschwitz concentration camp three years later.

Excelling in the arts at a boarding school for Jewish refugee children, Auerbach went on to study at London's St Martin's School of Art and the Royal College of Art.

He was active in Soho's artists circles in the 1950s and '60s, friends with influential British figurative painters Lucian Freud, Francis Bacon and Michael Andrews.

Auerbach was the last artist alive from the group, who were

each other's friends and rivals in the "unfashionable" pursuit of figurative art.

Auerbach, a private artist, said in a 2014 interview with the Guardian newspaper that he felt as though he was "always trying to catch up".

"It's only very recently, because I have lived for such an unconscionably long time, that I have felt that I have managed what you might call a little oeuvre," he said.