



Indicative Image Only

4 2 2

QLD HOUSE & LAND

Full Turn Key \$928,900

LOT 32 - PLEASANT GROVE

ALBANY CREEK QLD 4035

Nestled in the peaceful surrounds of Albany Creek, Pleasant Grove is an exclusive 5 lot development that offers a harmonious blend of suburban tranquility and urban convenience. Enjoy easy access to Brisbane CBD, quality education, diverse shopping and amenities, and efficient public transport, making Pleasant Grove an ideal haven for families seeking a balanced lifestyle.

- 17km from Brisbane CBD
- Conveniently located in close proximity to local schools and childcare facilities
- Close to 3 major shopping centres for convenience
- Public transport nearby including Strathpine train station
- An abundance of local parks and sporting facilities

Lot Size: 378m²

House Size: 195m²

GROUND FLOOR

141.10m²

GARAGE

37.60m²

ALFRESCO

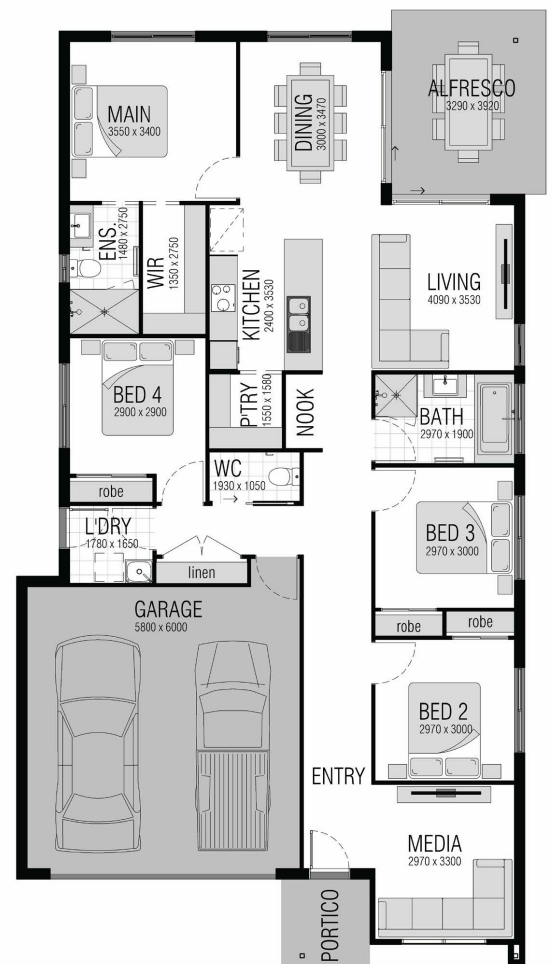
12.90m²

PORTICO

4.50m²

TOTAL

196.20m²



James Donnelly

0411 333 869

jamesdonnelly@eplace.com.au