



3 2 1

# QLD HOUSE & LAND Full Turn Key \$660,975

## LOT 330 - WOODHAVEN ESTATE BURPENGARY QLD 4505

Woodhaven Estate, nestled in the charming town of Burpengary, embodies the essence of a friendly rural lifestyle, complemented by urban convenience. Burpengary is one of the fastest-growing residential areas in the Moreton Bay Region with convenient access to major motorways, transport and amenities.

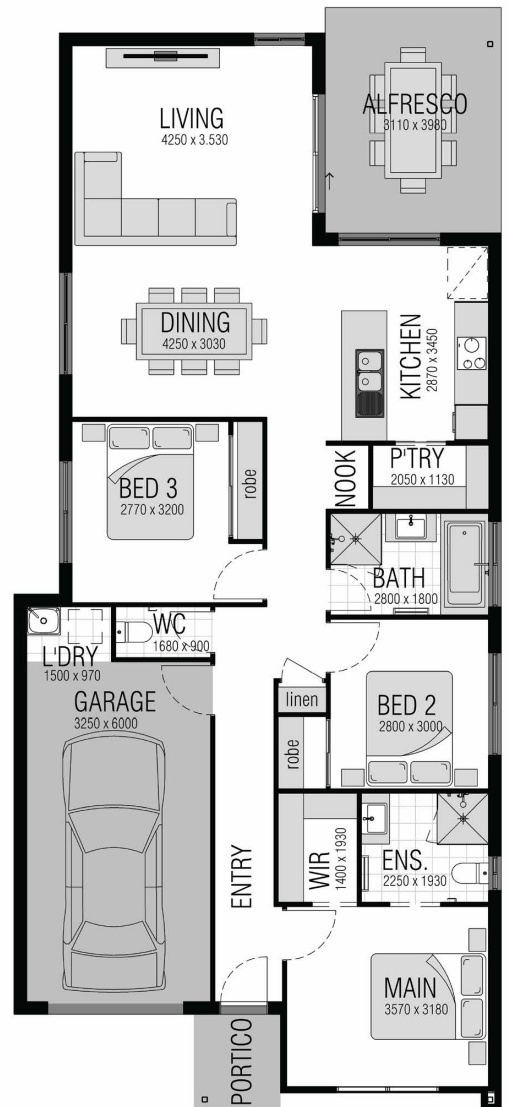
- 5 minutes to M1
- 8 minutes to public transport
- 41 minutes to Brisbane & 45 minutes to Caloundra
- Excellent schooling and childcare centres nearby
- Close proximity to shopping, medical and sporting facilities

**Lot Size:** 329m<sup>2</sup>

**House Size:** 150m<sup>2</sup>

GROUND FLOOR  
GARAGE  
ALFRESCO  
PORTICO  
**TOTAL**

111.80m<sup>2</sup>  
23.40m<sup>2</sup>  
12.40m<sup>2</sup>  
4.00m<sup>2</sup>  
**151.60m<sup>2</sup>**



**James Donnelly**  
**0411 333 869**

[jamesdonnelly@eplace.com.au](mailto:jamesdonnelly@eplace.com.au)