



QLD HOUSE & LAND

LOT 331 - WOODHAVEN ESTATE

BURPENGARY QLD 4505

Full Turn Key \$663,362

Woodhaven Estate, nestled in the charming town of Burpengary, embodies the essence of a friendly rural lifestyle, complemented by urban convenience. Burpengary is one of the fastest-growing residential areas in the Moreton Bay Region with convenient access to major motorways, transport and amenities.

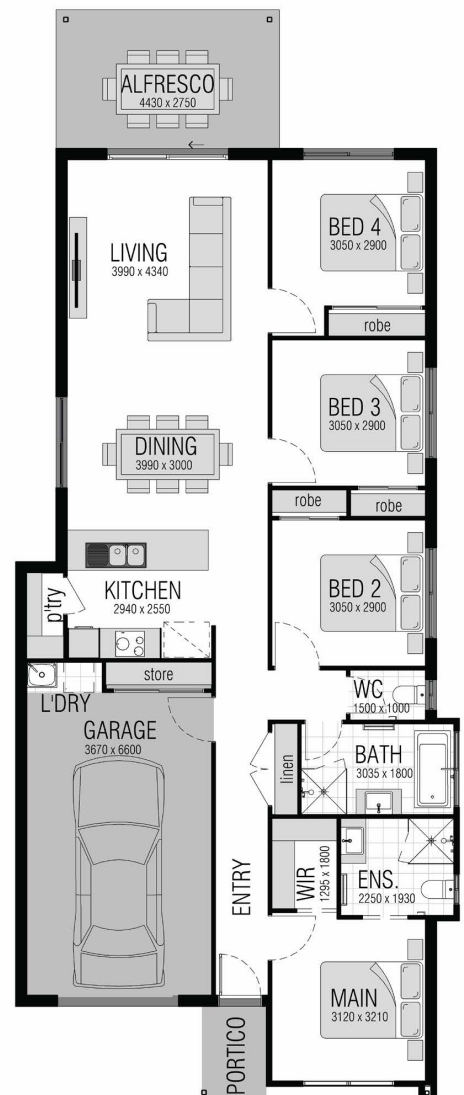
- 5 minutes to M1
- 8 minutes to public transport
- 41 minutes to Brisbane & 45 minutes to Caloundra
- Excellent schooling and childcare centres nearby
- Close proximity to shopping, medical and sporting facilities

Lot Size: 324m²

House Size: 155m²

GROUND FLOOR
GARAGE
ALFRESCO
PORTICO
TOTAL

116.20m²
26.10m²
12.20m²
3.70m²
158.10m²



James Donnelly
0411 333 869

jamesdonnelly@eplace.com.au